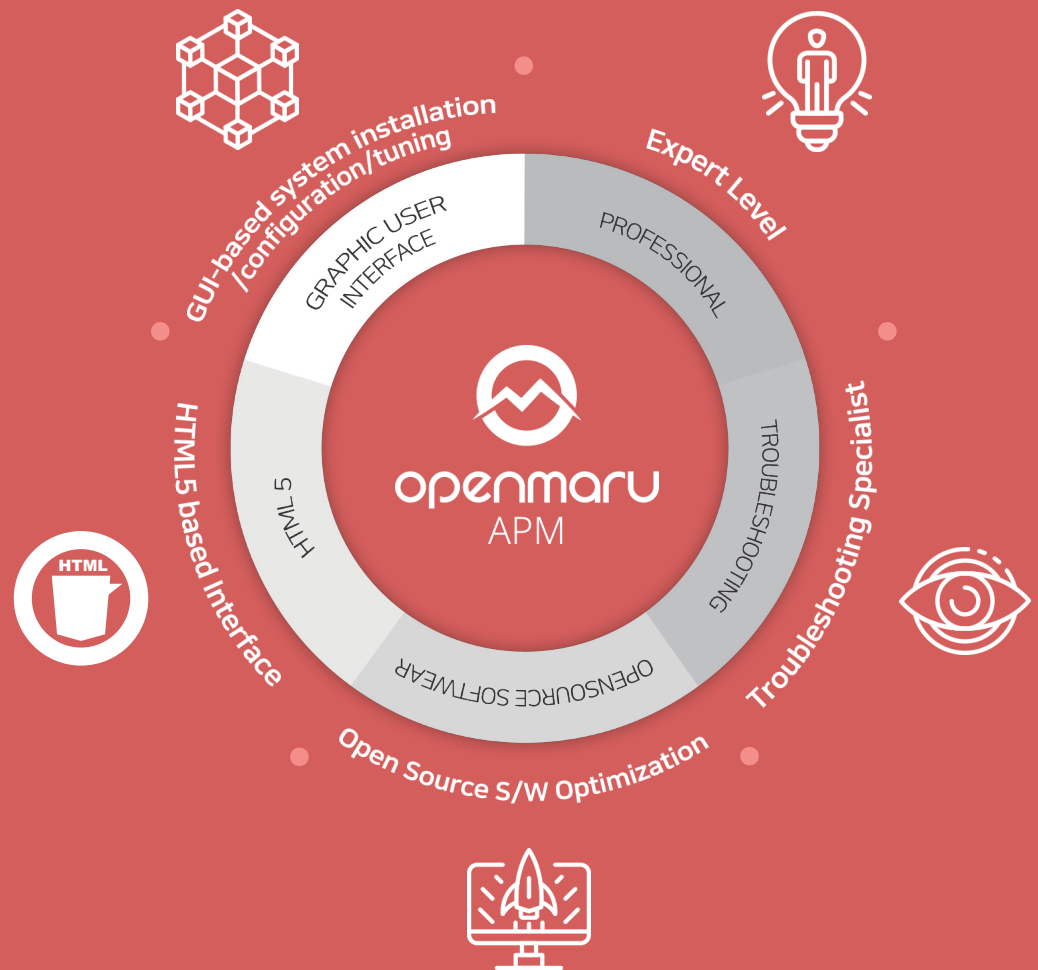


Application Performance Management

OPENMARU APM

The Best APM for
Open Source software





Openmaru APM is an integrated performance management solution that provides monitoring as well as provisioning features that install, configure and tune the major open source web servers or WAS.

Is it possible to identify the cause and take immediate action for system failure or performance issues?



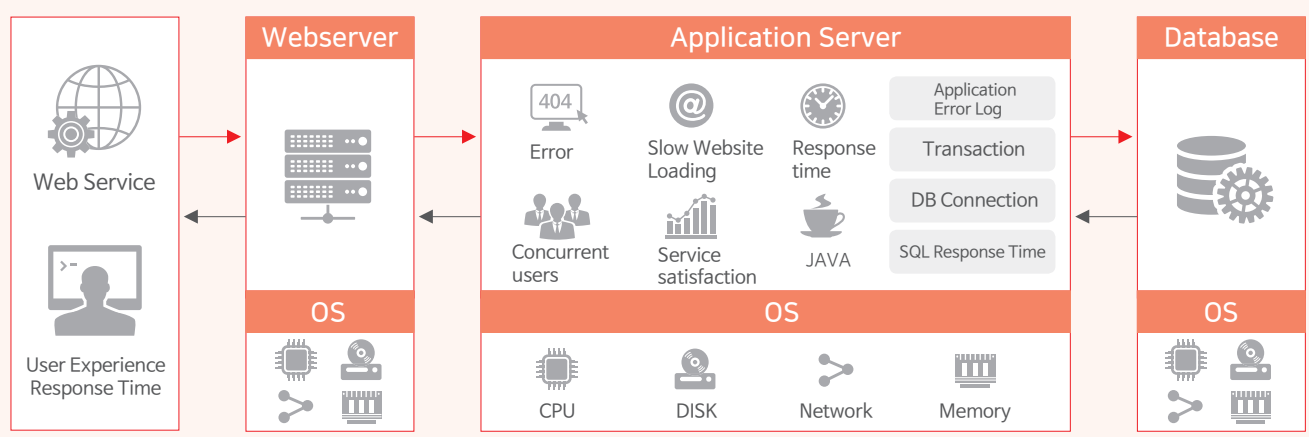
System Operation Team (WAR ROOM)



Problems

- 1 Separate monitoring and individual tools
- 2 Different application structures
- 3 Manpower-dependent operations

Performance management tools for rapid diagnosis and action in the event of performance issues in a three-tier structure



openmaru APM What to Expect

Establishment of a continuous performance management system through application performance monitoring and failure diagnosis / action.



Intuitive real-time monitoring

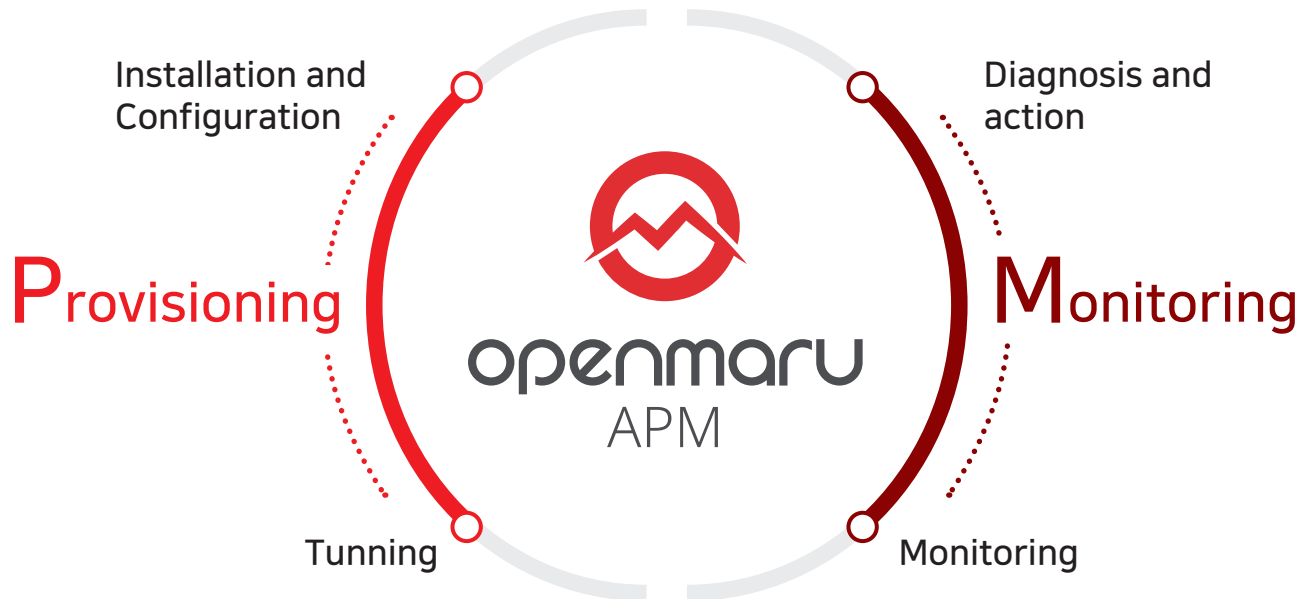


Rapid fault identification and prevention feature



Operational predictions and actions

openmaru APM Main Functions



- 01** ● Installation
Installs software required by Web systems such as WAS or Web server automatically if Linux is installed
- 02** ● Configuration
Supports complex configurations such as WAS clustering, data grid, and required operation scripts.
- 03** ● Tunning
Professional tuning (Linux kernel, Web server/JVM/WAS tuning)
- 04** ● Monitoring
Comprehensive support from user-side Service Quality Index (APDEX) to system-side OS/Java/WAS
- 05** ● Diagnosis and Actions
Provides tools to diagnose and take action on thread dump, network status, web server status, etc.

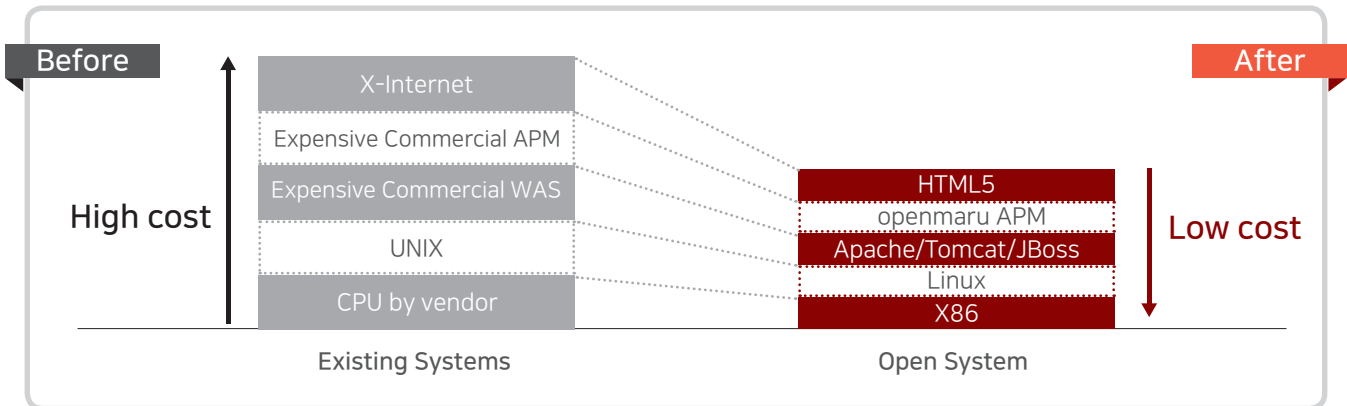
openmaru APM Function Details

User	Java	Container	Hardware
Application	Application Server	OpenShift/Docker	Hosted OS
Error Slow-Loading Site Concurrent Users Service Satisfaction	SQL TPS Java Webserver	Container Images Docker Info Docker Stats	Memory Network CPU Disk
Failure Prediction Real-time Failure Detection Service Error Rate APDEX Call Statistics Slow URL Search Notification Center Daily/Monthly Statistics Report	JVM CPU Time GC Time Memory Utilization Thread Dump Analysis Transaction Heat Map SQL Response Time SQL execution Web Server Worker Status	Container List Container Image List CPU Usage per Container Memory Utilization per Container Container Statistics Information Size Information by Image Container Meta Information Image History Information	Network Packet Error Netstat Status Disk I/O processing time CPU Utilization Disk I/O Usage Disk IO Average Waits Load Average Number of File Nodes

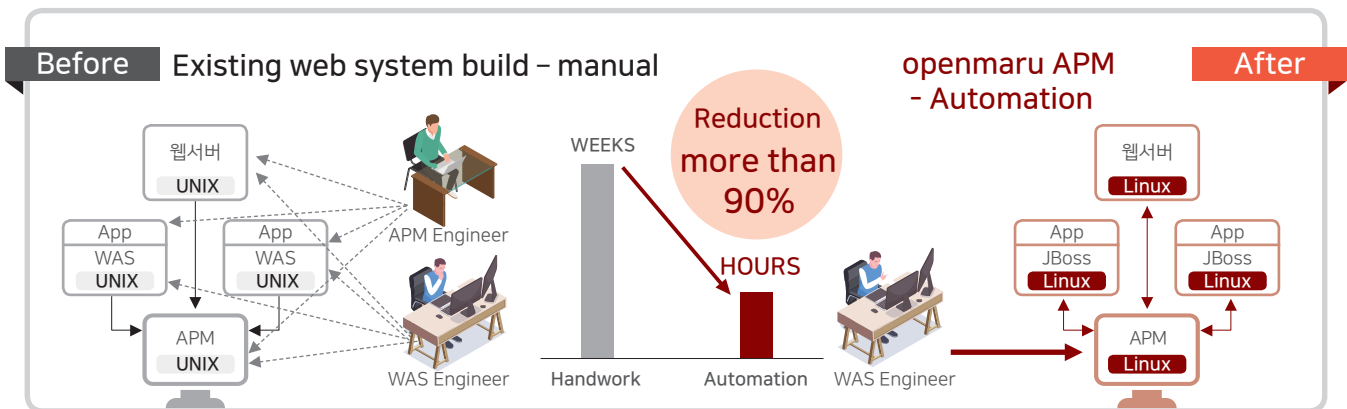
openmaru APM	openmaru APM	openmaru APM	openmaru APM	openmaru APM
Active-X	HTML5	HTML5	HTML5	HTML5
Java EE	Spring /e-Gov	Spring /e-Gov	Spring /e-Gov	Spring /e-Gov
monopoly/high price WAS	Apache/Tomcat/JBoss	Apache/Tomcat/JBoss	Apache/Tomcat/JBoss	Apache/Tomcat/JBoss
Java	Java	Java	Java	Java
vPar/PowerVM/OracleVM	Red Hat Virtualization	vmware openstack	amazon web services	docker OPENSHIFT
HP-UX/AIX/Solaris	Red Hat Linux	RED HAT ENTERPRISE VIRTUALIZATION	Microsoft Azure	
PA-RISC/Power/SPARC	X86		Google Cloud Platform	
< Physical Environment >	< Linux/Virtualization >	< Private Cloud >	< Public Cloud >	< Container >

openmaru APM's Advantages

01 Transition to a low-cost, high-efficiency system



02 Integrated technical support - Installation/Configuration/Tuning/Monitoring



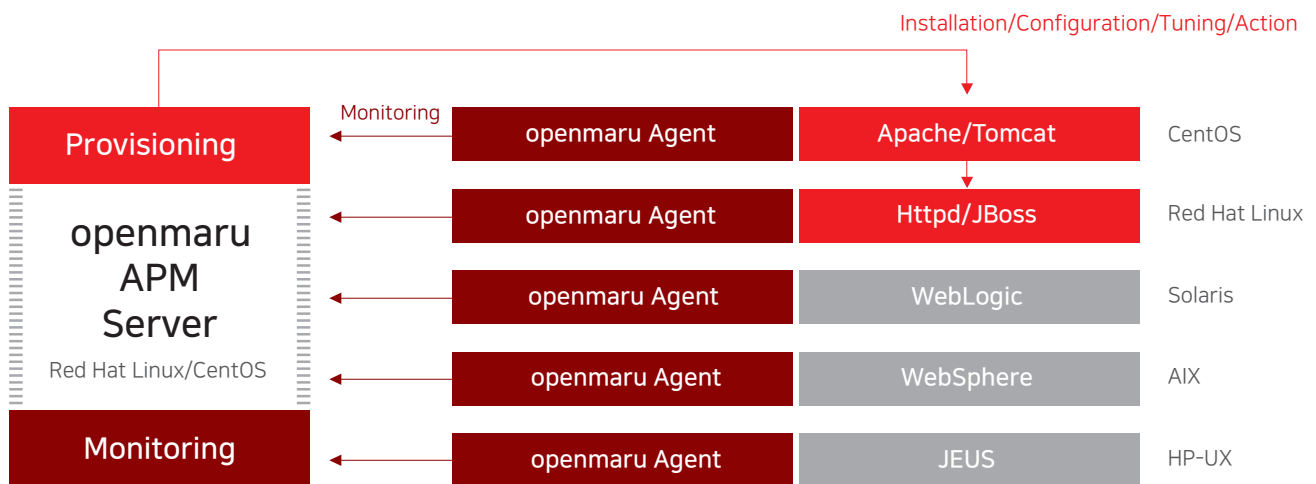
Supported Environment

Openmaru APM Server Installation Environment

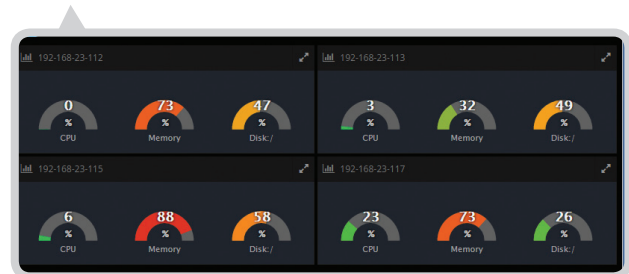
Category	Supported Content		
Supported Operating Systems	RHEL (Red Hat Enterprise Linux) 6.x/7.x	x86_64	
	CentOS 6.x/7.x	x86_64	
Openmaru APM Server Minimum operating Environment	Division	Minimum Environment	Recommended Environment
	Number of Cores	4 Core	8 Core or higher
	Memory	8 GB	8 GB
Disk	300 GB	500 GB	

openmaru APM Configuration Architecture


 = **A**h! **P**rovisioning & **M**onitoring



< Monitoring Dashboard >



< System Monitoring >

openmaru APM Agent Supported Environment

Supported OS	Supported WAS
IBM AIX	Oracle WebLogic
HP-UX	IBM WebSphere Application Server
Oracle Solaris	Tmaxsoft JEUS
Linux	Apache Jakarta Tomcat
Microsoft Windows	Caucho Technology Resin
	RedHat JBoss Enterprise Application Server



<https://www.openmaru.io/en>

Address. Rm 906, 31, Ttukseom-ro 1-gil,
Seongdong-gu, Seoul, Korea
(ZIP code. 04778)

Tel. 82 2 469 5426 Fax. 82 2 469 7247
Email. sales@openmaru.io