



opennaru



# JBOSS 개발환경 설정 가이드

Opennaru, Inc.



**JBoss 개발환경 설정**

- JBoss EAP 7.1 설치 방법

```
$ unzip jboss-eap-7.1.0.zip
```

- 관리 사용자 추가

- `jboss-eap-7.1/bin/add-user.sh` 실행
- ManagementRealm, 사용자명 : `wasadm`, 패스워드 : `openmaru!2` 로 입력

```
$ ./add-user.sh
```

```
What type of user do you wish to add?
```

- a) Management User (mgmt-users.properties)
- b) Application User (application-users.properties)

```
(a):
```

```
Enter the details of the new user to add.
```

```
Realm (ManagementRealm) :
```

```
Username : wasadm
```

```
Password :
```

```
Re-enter Password :
```

```
About to add user 'jboss' for realm 'ManagementRealm'
```

```
Is this correct yes/no? yes
```

```
Added user 'jboss' to file '/opt/eap/standalone/configuration/mgmt-users.properties'
```

```
Added user 'jboss' to file '/opt/eap/domain/configuration/mgmt-users.properties'
```

```
Is this new user going to be used for one AS process to connect to another AS process?
```

```
e.g. for a slave host controller connecting to the master or for a Remoting connection for server to server EJB calls.
```

```
yes/no? yes
```

```
To represent the user add the following to the server-identities definition <secret value="cm9ja3MhMjM0" />
```

## JBoss Developer Studio

### □ Eclipse 기반의 JBoss 제품군 개발 도구

- EAP : Hibernate, Seam, Richfaces
- SOA-P : JBPM, JBoss ESB
- BRMS : Rule Editor
- JBoss Portal
- JBoss Data Services

### □ JBoss EAP Subscription 구매시 JBDS 25 User 사용가능함

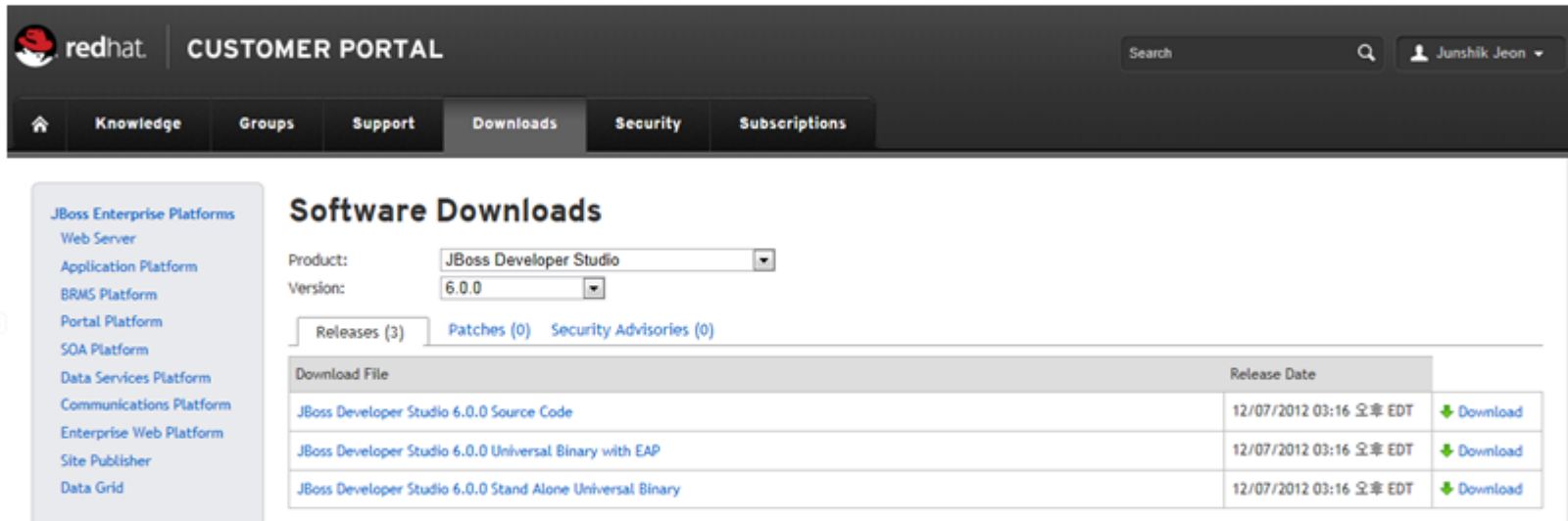
## 기존 Eclipse에 JBoss Tools 플러그인 설치

- 오픈 소스 개발 도구
- 설치된 Eclipse에 JBoss Tools를 설치하여 JBoss EAP 서버 사용

## JBoss Developer Studio 설치

### □ 다운로드

- <http://access.redhat.com/>

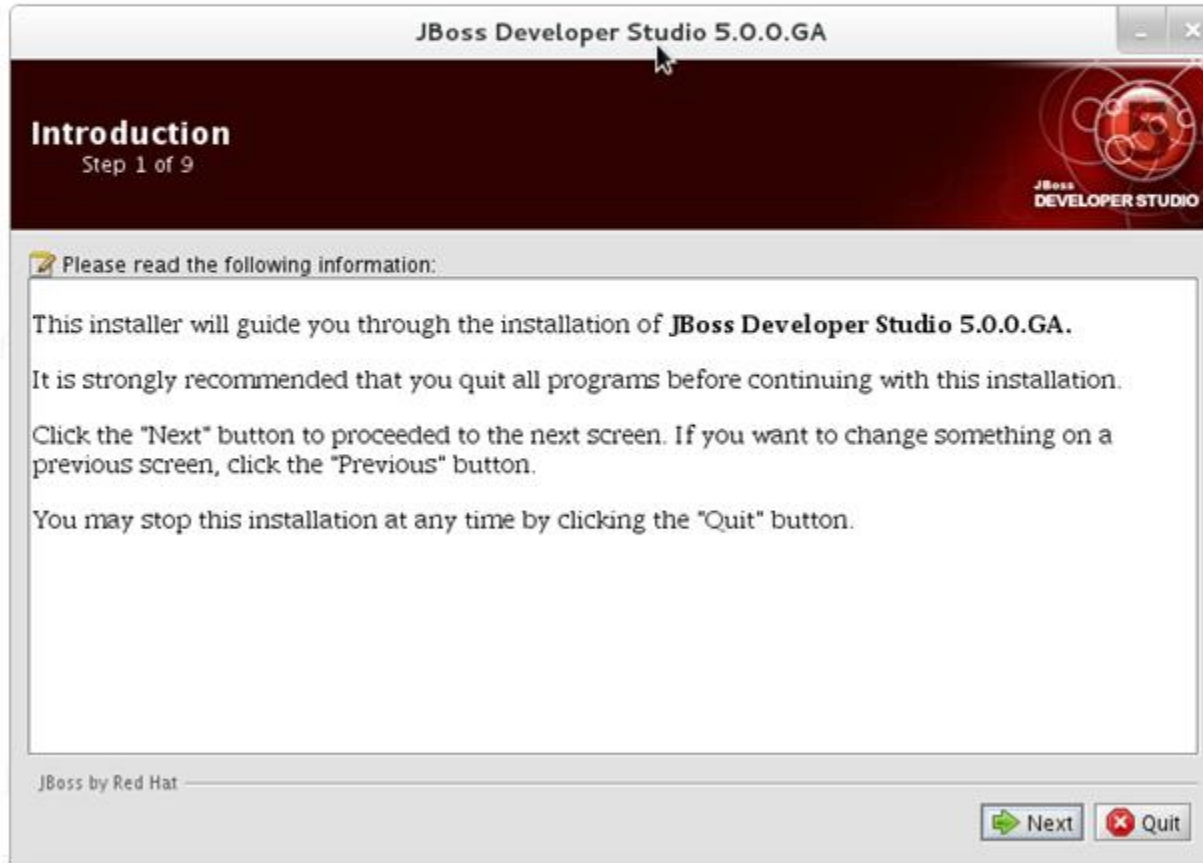


The screenshot shows the Red Hat Customer Portal interface. The top navigation bar includes the Red Hat logo, 'CUSTOMER PORTAL', a search box, and a user profile for 'Junshik Jeon'. Below the navigation bar, there are tabs for 'Knowledge', 'Groups', 'Support', 'Downloads', 'Security', and 'Subscriptions'. The 'Downloads' tab is selected, leading to the 'Software Downloads' page. On the left, there is a sidebar with a list of JBoss Enterprise Platforms. The main content area shows filters for 'Product' (JBoss Developer Studio) and 'Version' (6.0.0). Below the filters, there are tabs for 'Releases (3)', 'Patches (0)', and 'Security Advisories (0)'. A table lists the available download files with their release dates and download links.

Download File	Release Date	
<a href="#">JBoss Developer Studio 6.0.0 Source Code</a>	12/07/2012 03:16 오후 EDT	<a href="#">Download</a>
<a href="#">JBoss Developer Studio 6.0.0 Universal Binary with EAP</a>	12/07/2012 03:16 오후 EDT	<a href="#">Download</a>
<a href="#">JBoss Developer Studio 6.0.0 Stand Alone Universal Binary</a>	12/07/2012 03:16 오후 EDT	<a href="#">Download</a>

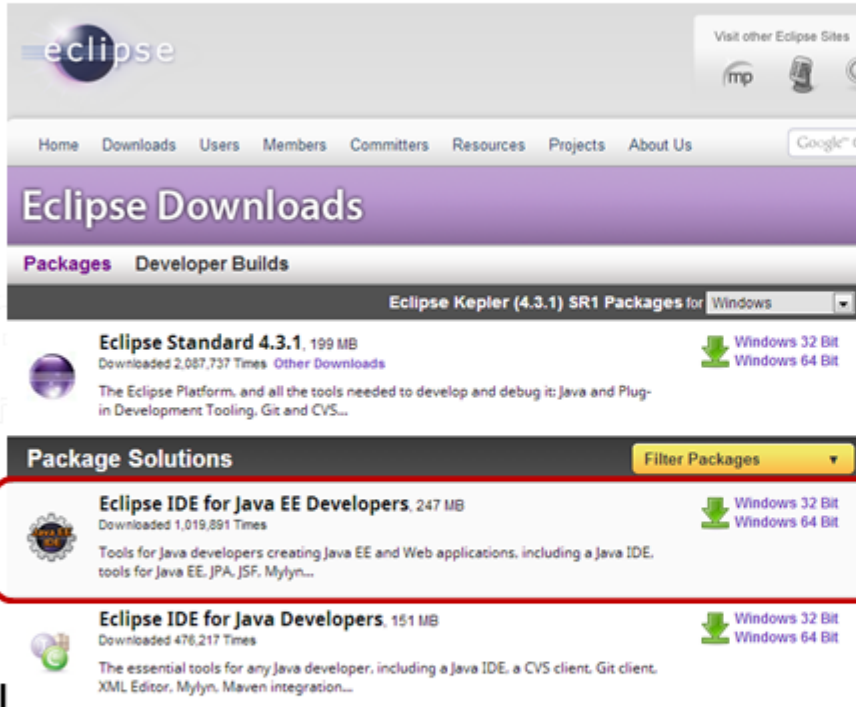
## 설치

```
java -jar jbdevstudio-product-universal-x.x.x-*****.jar
```



## Eclipse 다운로드

- <http://www.eclipse.org/download>



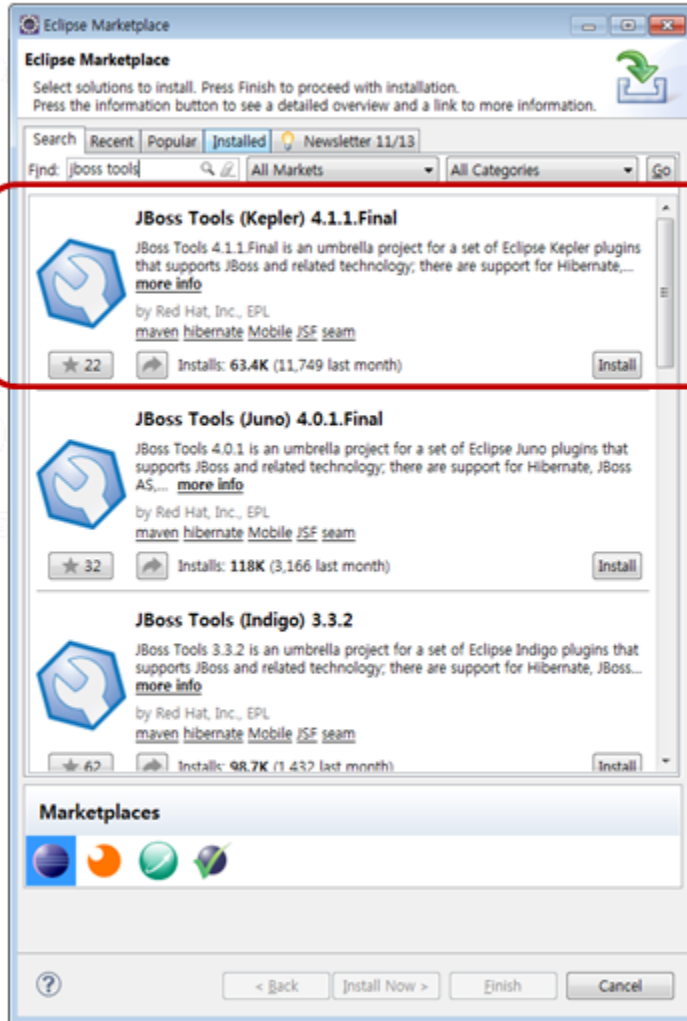
The screenshot shows the Eclipse Downloads page. The main heading is 'Eclipse Downloads'. Below it, there are tabs for 'Packages' and 'Developer Builds'. A dropdown menu is set to 'Eclipse Kepler (4.3.1) SR1 Packages for Windows'. The page lists several packages:

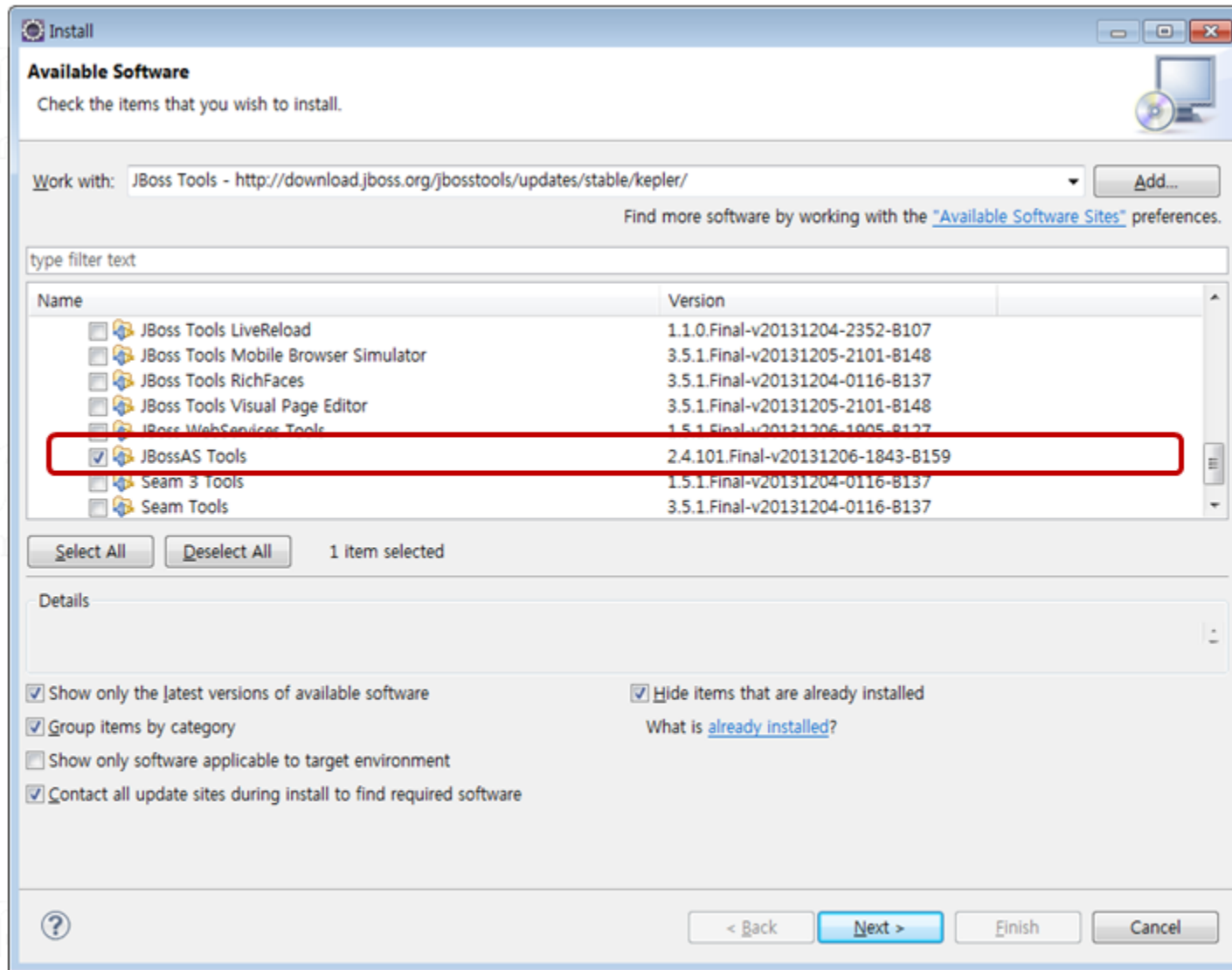
- Eclipse Standard 4.3.1**, 199 MB, Downloaded 2,087,737 Times. Description: The Eclipse Platform, and all the tools needed to develop and debug its Java and Plug-in Development Tooling, Git and CVS...
- Eclipse IDE for Java EE Developers**, 247 MB, Downloaded 1,019,891 Times. Description: Tools for Java developers creating Java EE and Web applications, including a Java IDE, tools for Java EE, JPA, JSF, Mylyn...
- Eclipse IDE for Java Developers**, 151 MB, Downloaded 476,217 Times. Description: The essential tools for any Java developer, including a Java IDE, a CVS client, Git client, XML Editor, Mylyn, Maven integration...

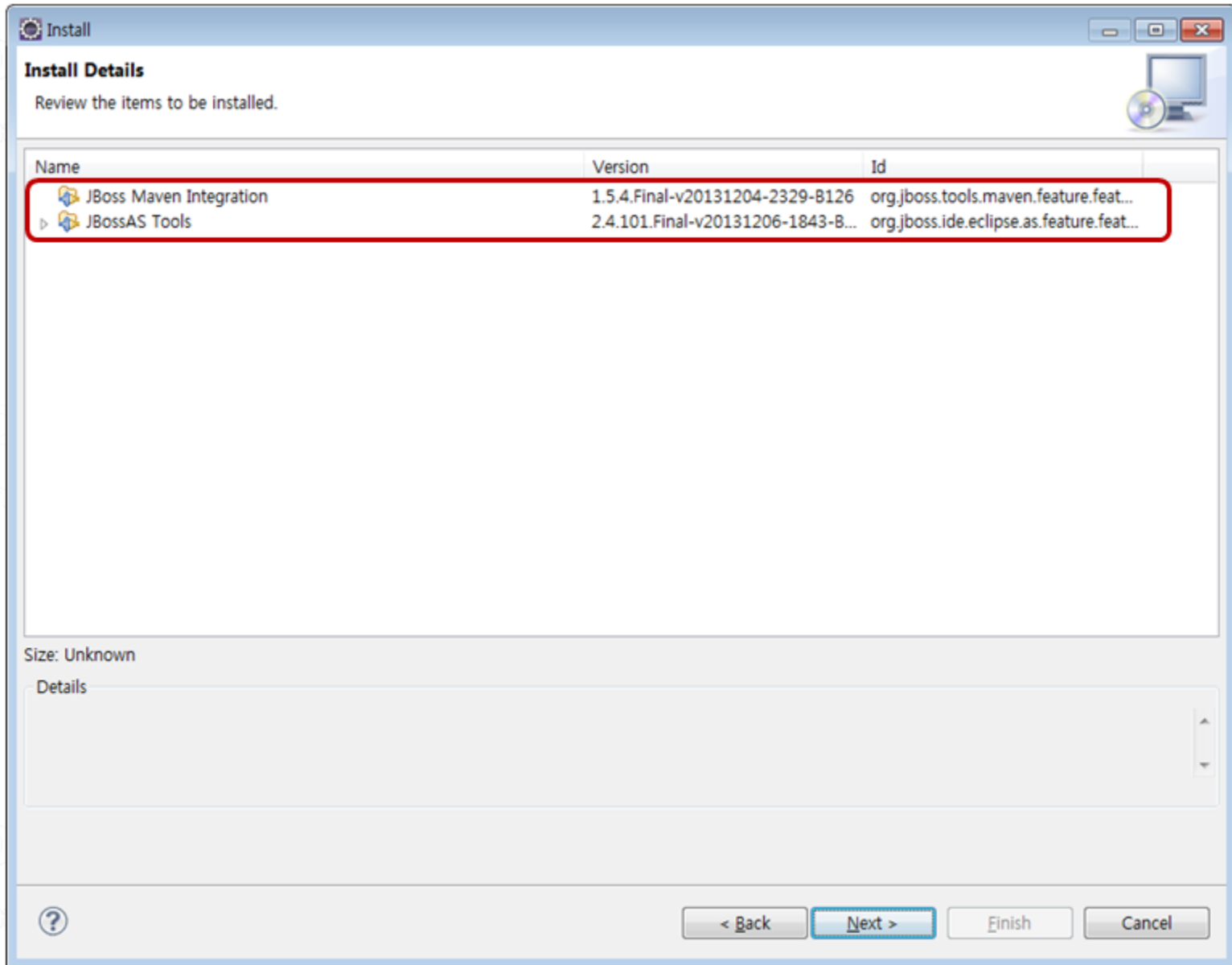
## 설치

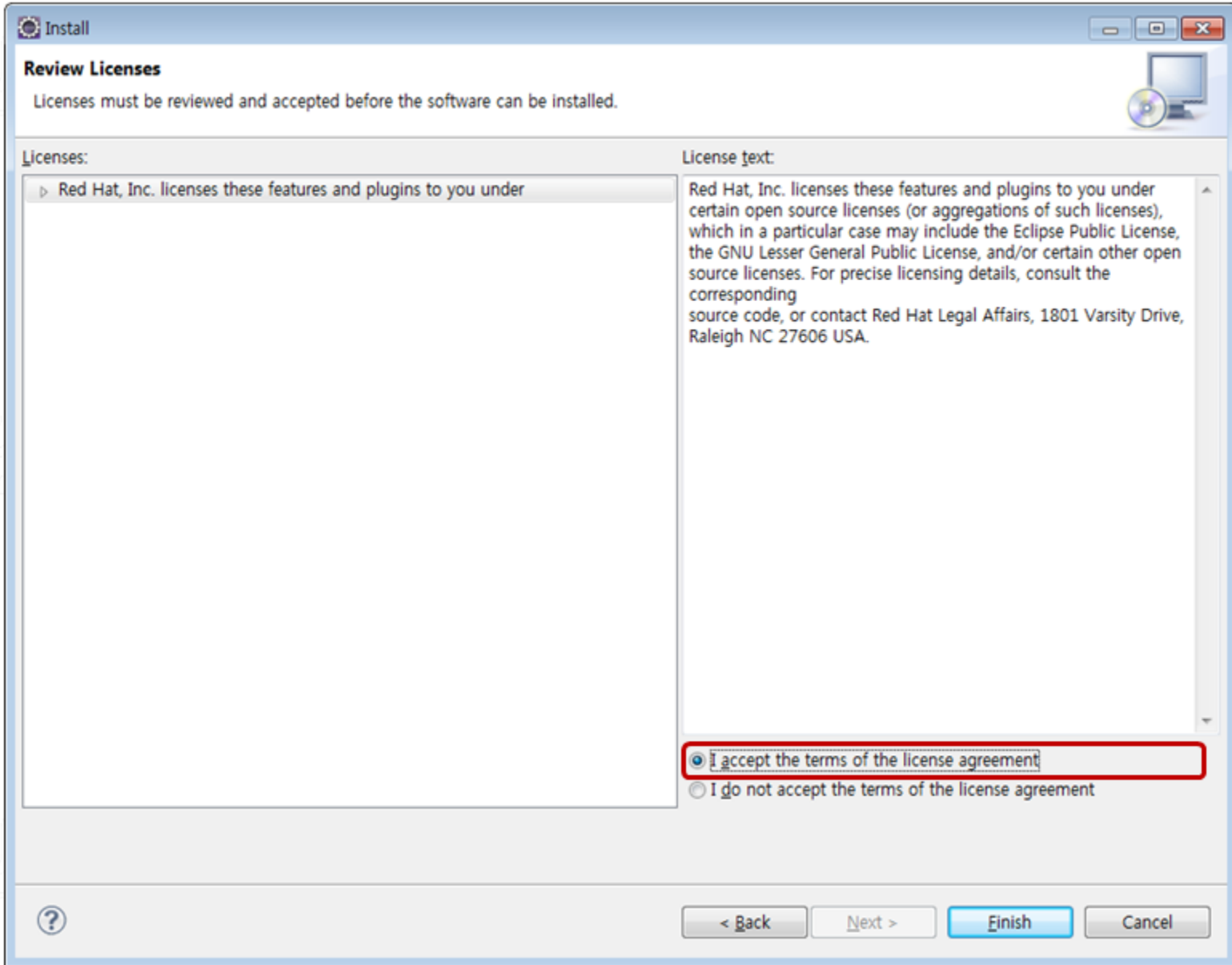
- 원하는 디렉토리에 ZIP 파일을 푼다.



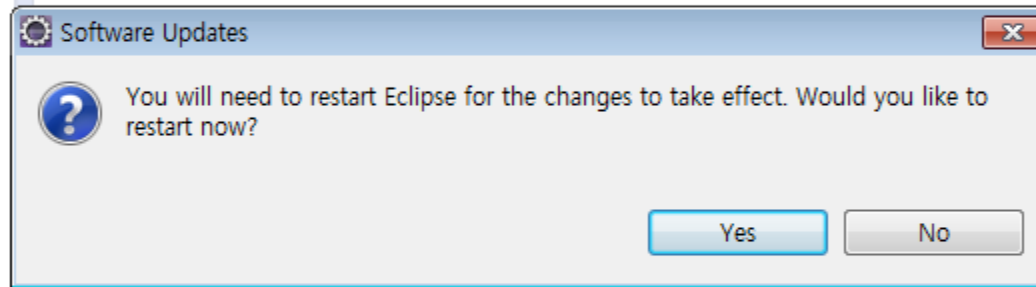




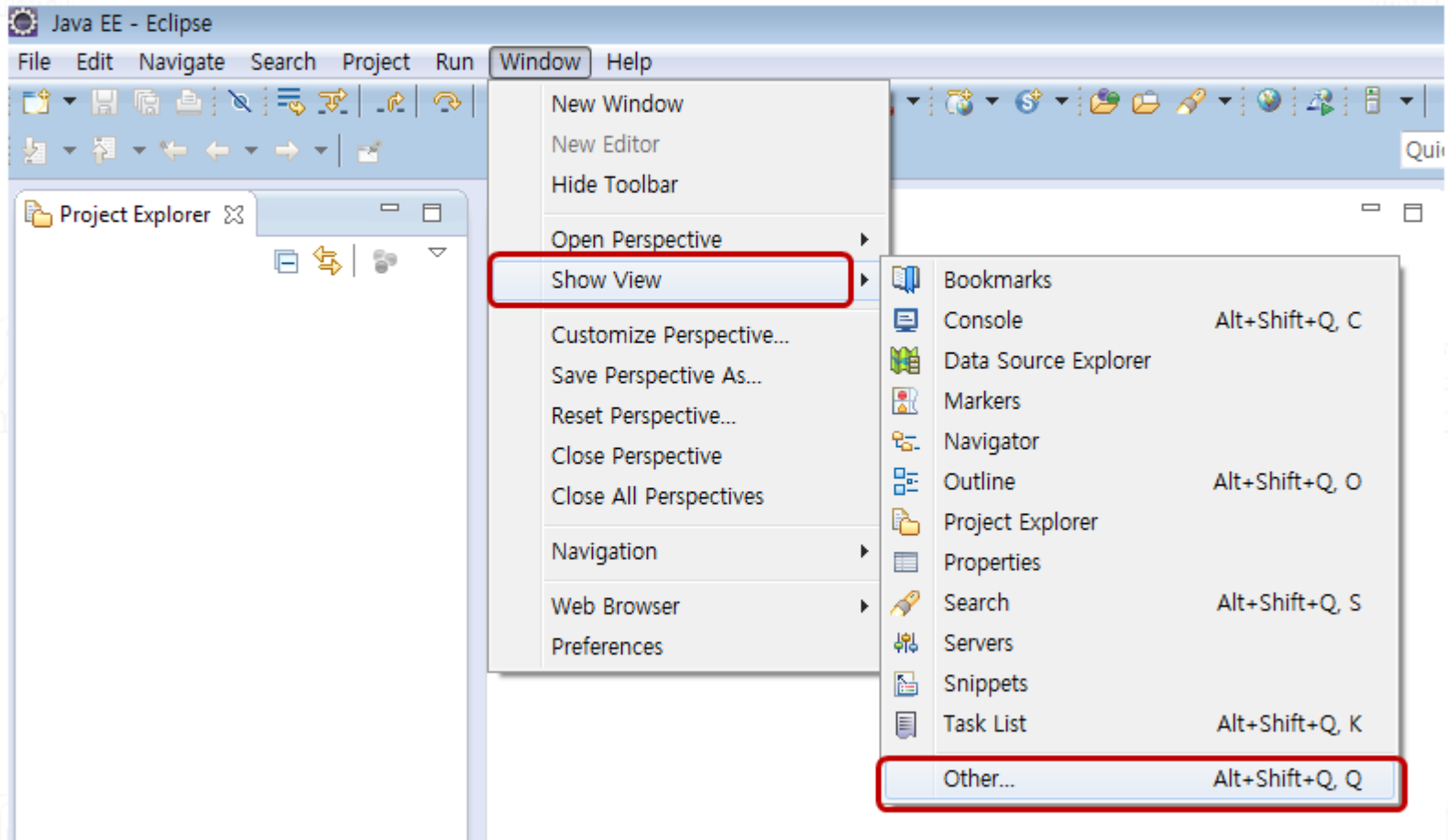




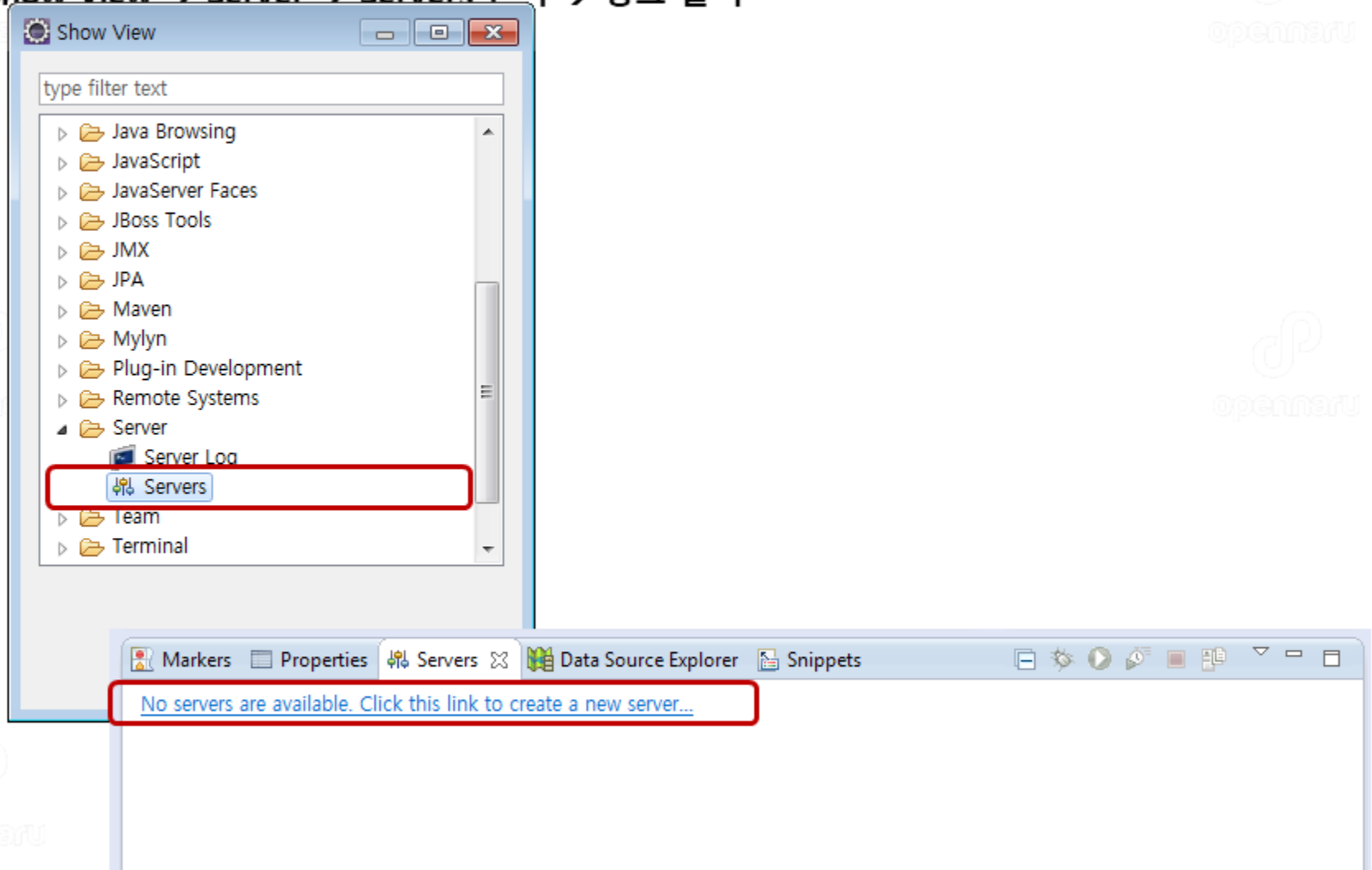
이클립스를 재시작하면 JBoss 플러그인 설치가 완료됩니다.

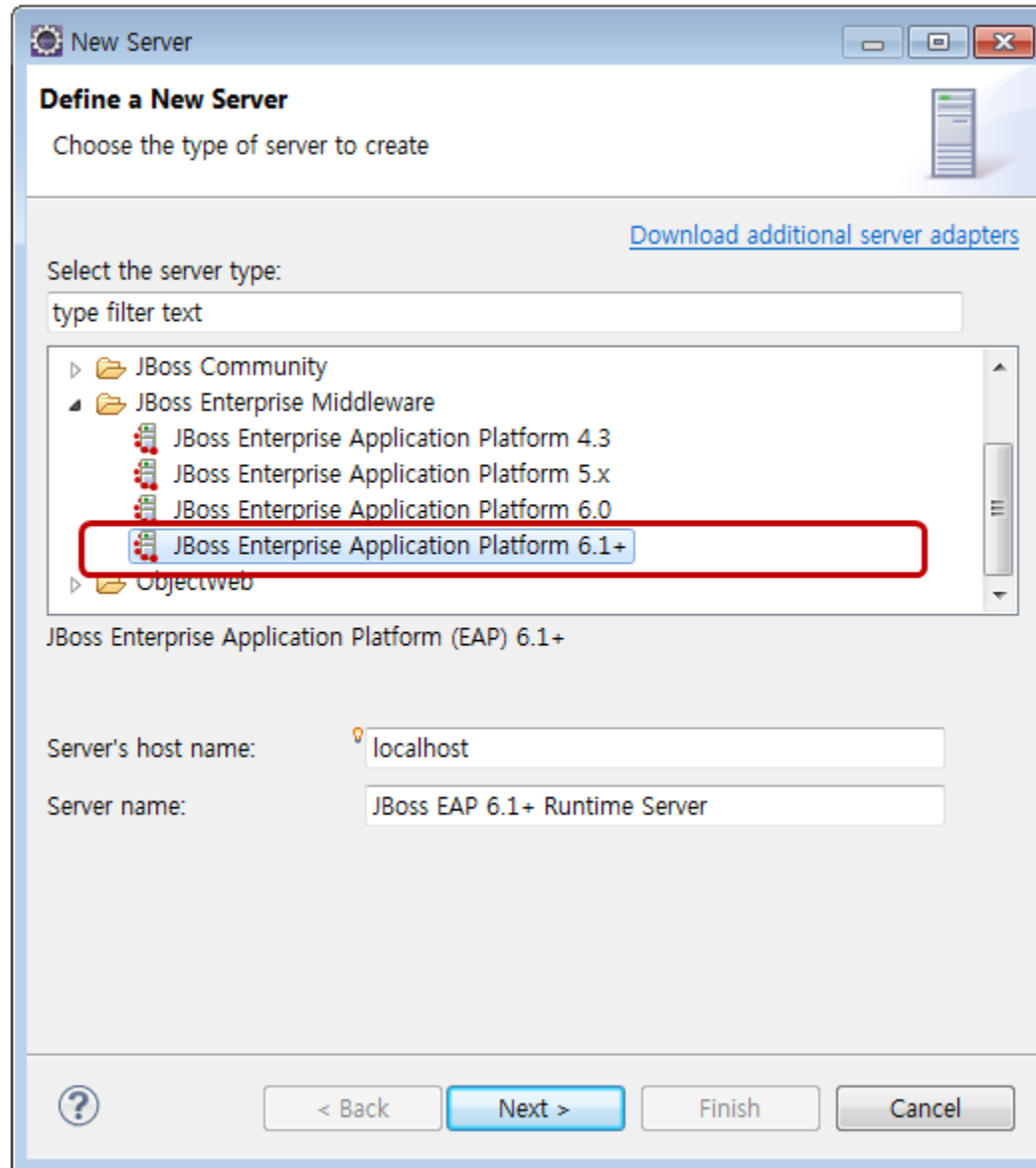


## • Show View → Other →



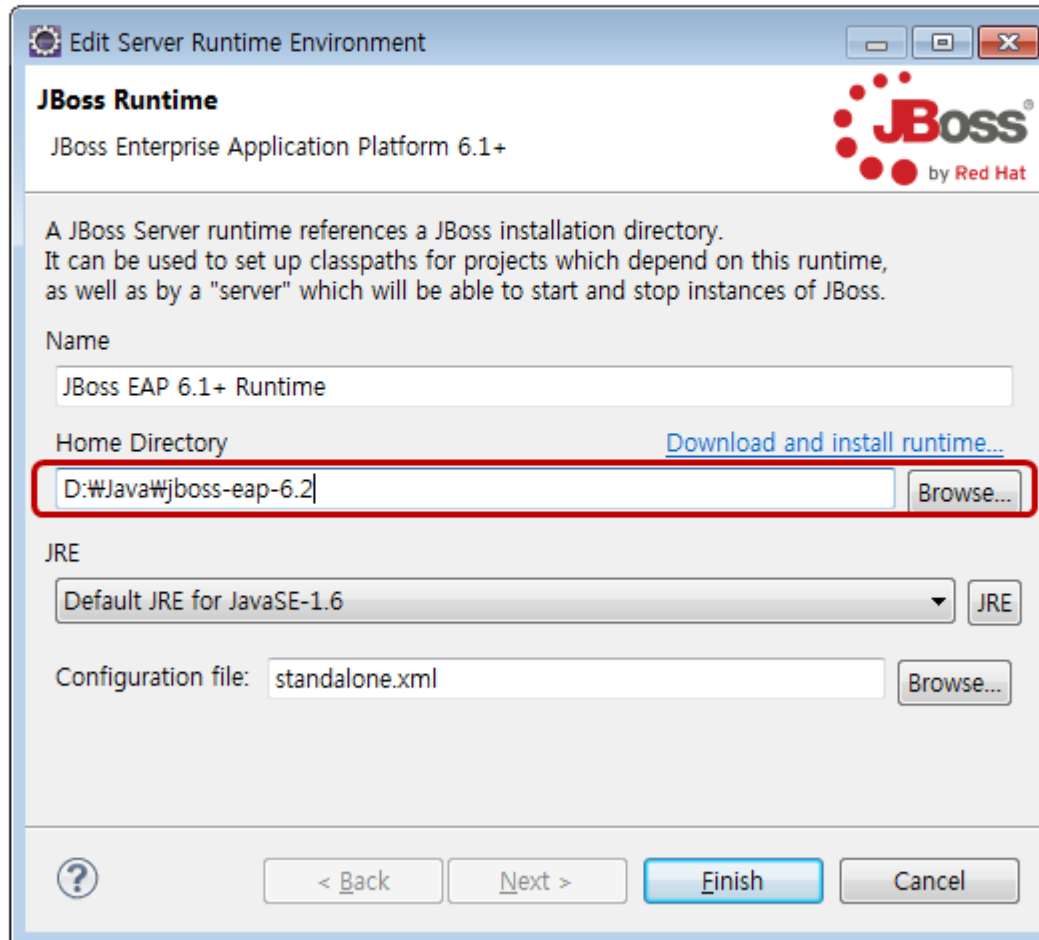
- Show View → Server → Servers 선택 → 링크 클릭



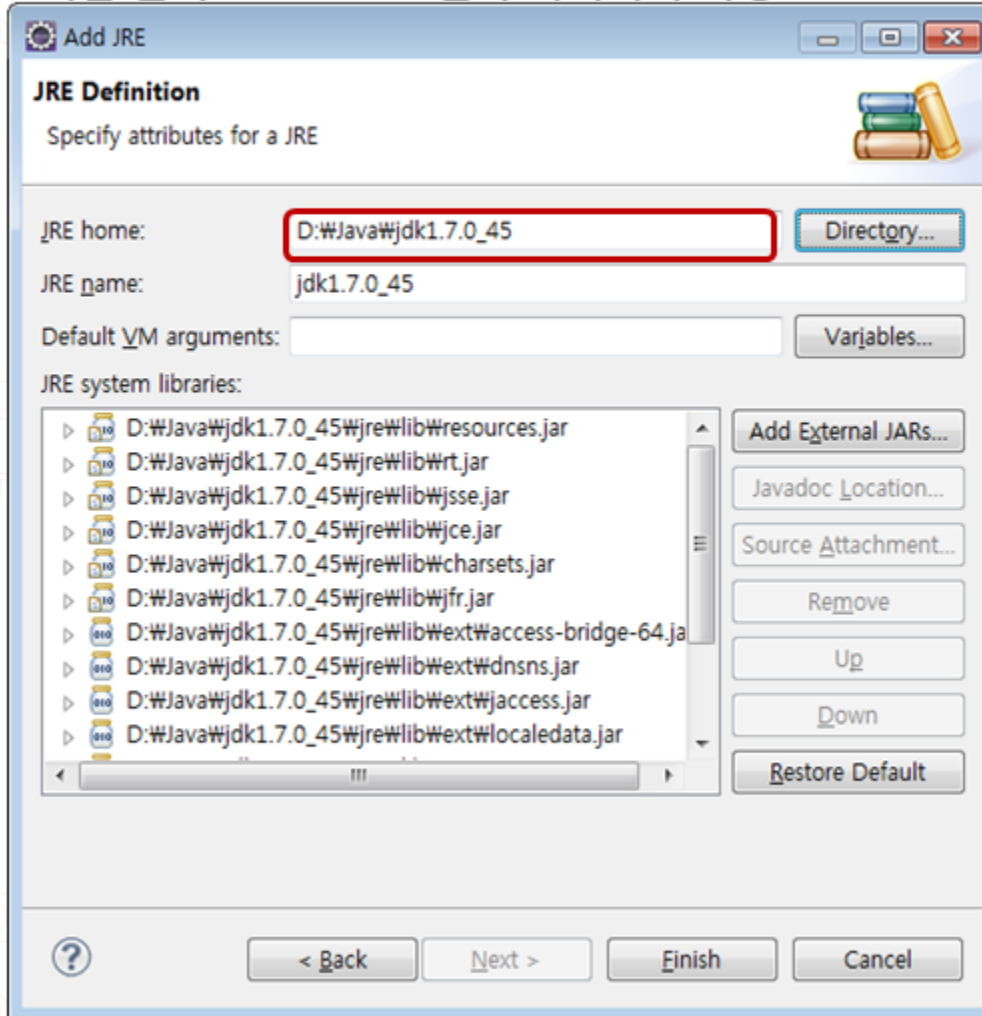




- JBoss EAP 7.1가 설치된 디렉터리를 지정한다.
- JBoss EAP 7.1 ZIP 파일을 압축을 풀어 놓은 디렉터리를 선택한다.



\* JRE 버튼 클릭 → JDK 1.8 설치 디렉터리 지정





**New Server**

**JBoss Runtime**  
JBoss Enterprise Application Platform 6.1+

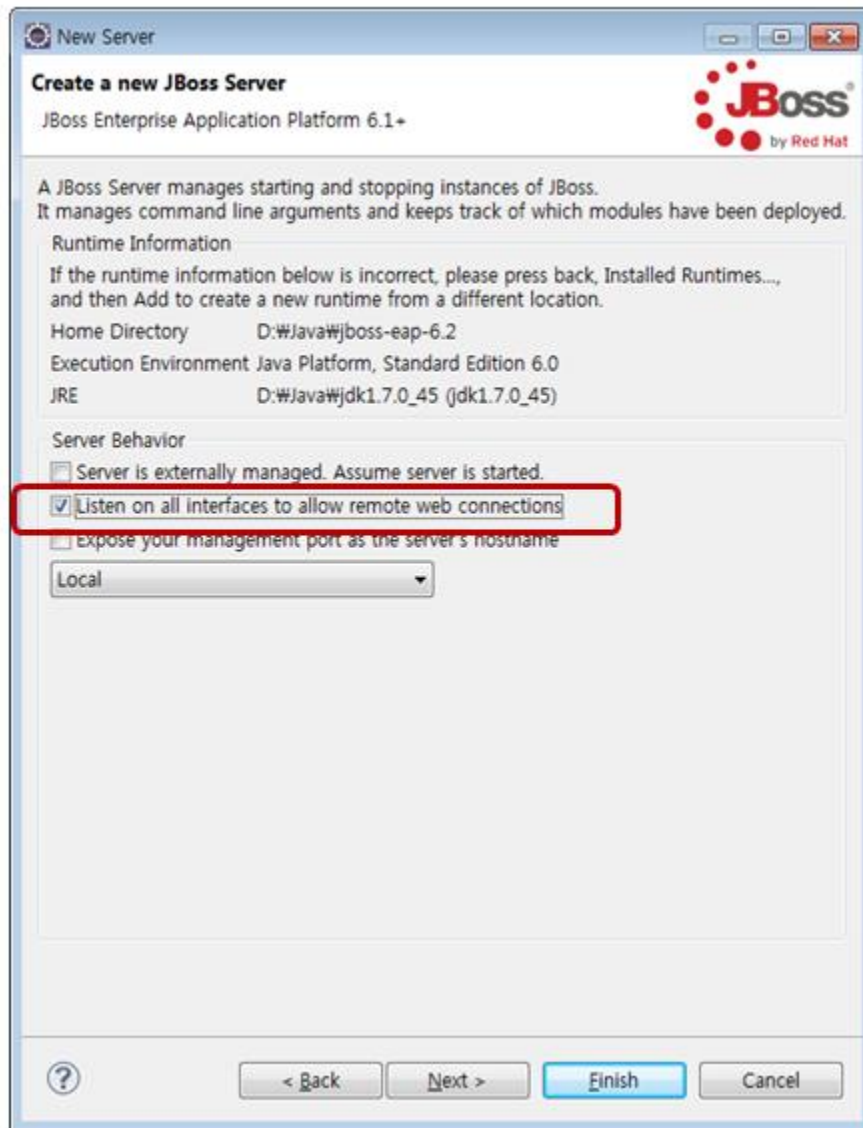
A JBoss Server runtime references a JBoss installation directory. It can be used to set up classpaths for projects which depend on this runtime, as well as by a "server" which will be able to start and stop instances of JBoss.

Name: JBoss EAP 6.1+ Runtime

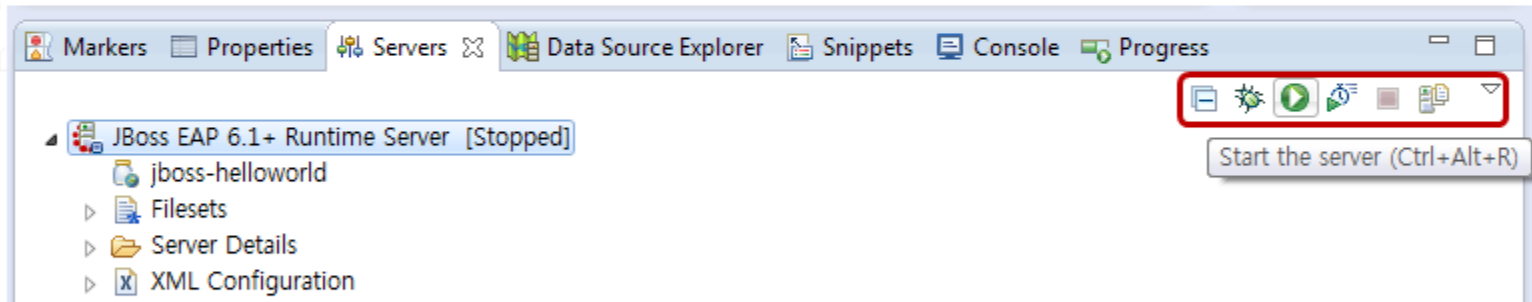
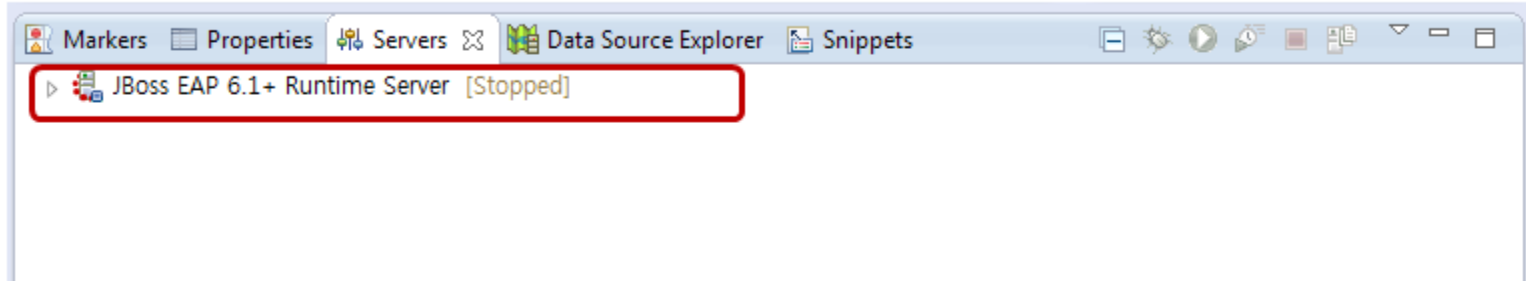
Home Directory: D:\Java\jboss-eap-6.2 [Download and install runtime...](#)

JRE: **jdk1.7.0\_45**

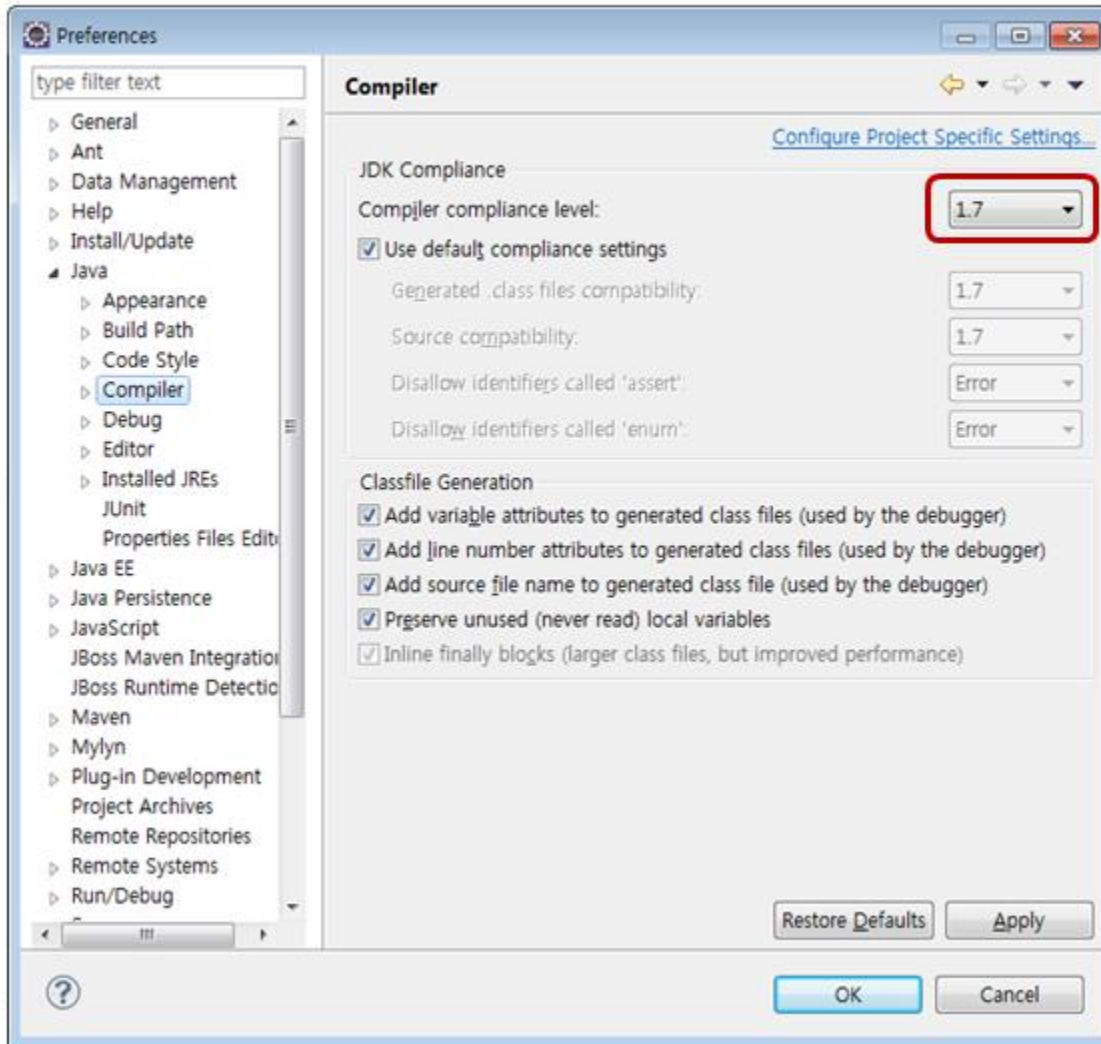
Configuration file: standalone.xml



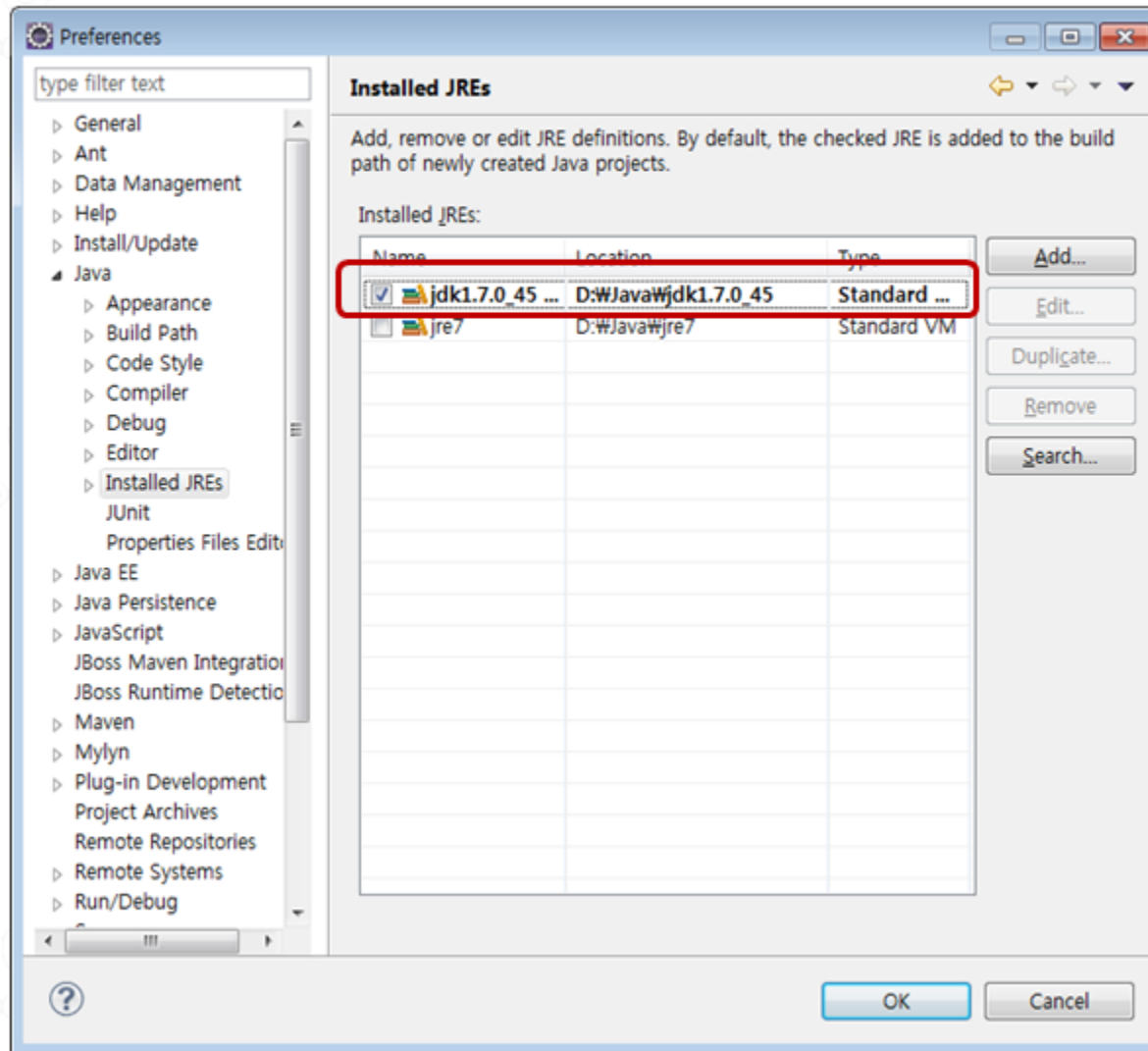
## • 애플리케이션 배포 및 서버 시작 / 종료 / 디버깅



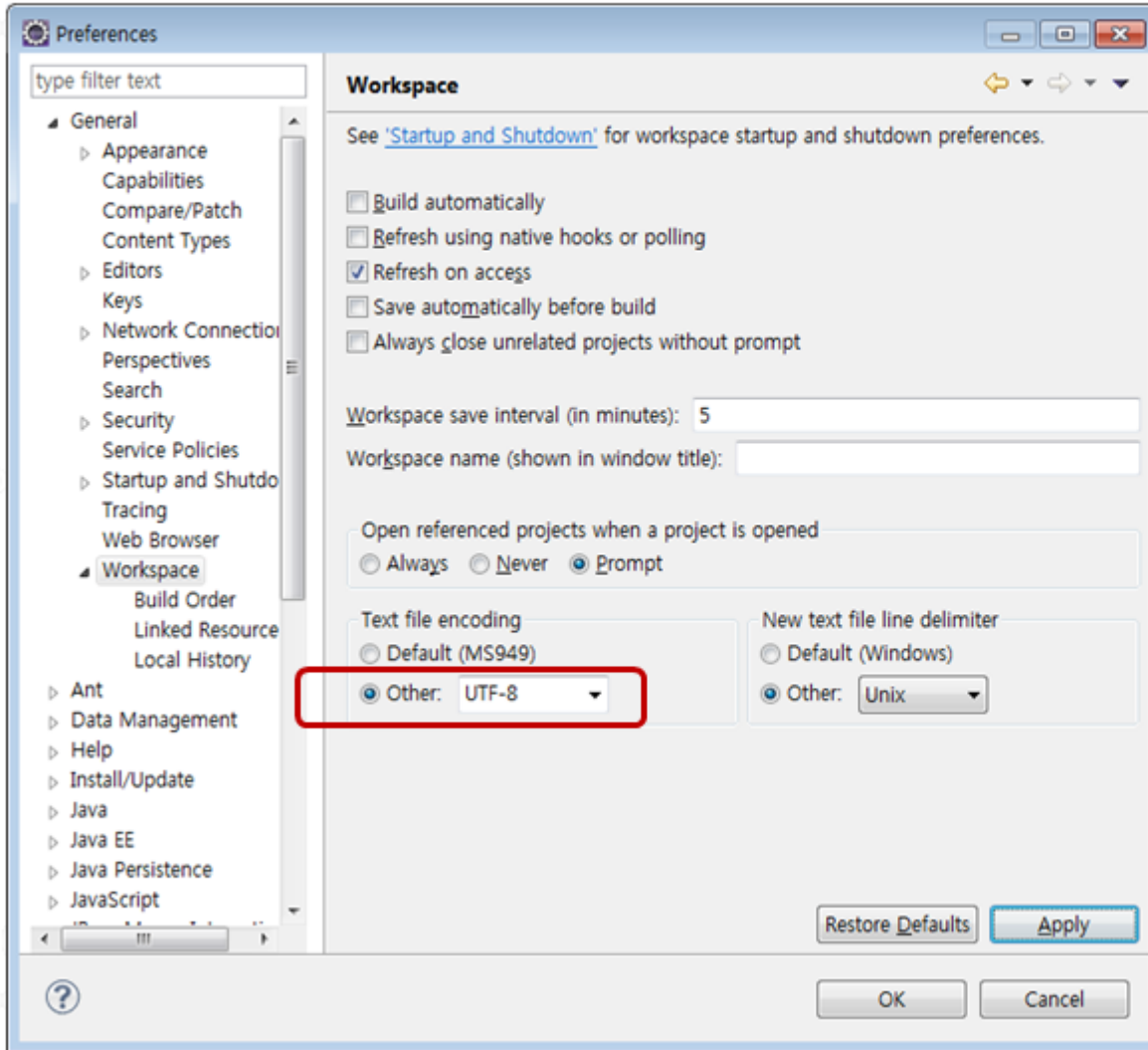
## Java → Compiler 버전 확인



## Java → Installed JREs 확인



## General → Workspace → Text file Encoding 확인





- JBoss Standalone 실행 & CLI 실행

```
d:\Java\jboss-eap-6.2\bin> standalone.bat
```

```
d:\Java\jboss-eap-6.2\bin> jboss-cli.bat -c
```

```
[standalone@localhost:9999 /] /subsystem=web/configuration=jsp-configuration:/write-attribute(name=development,value=true)
{
  "outcome" => "success",
  "response-headers" => {
    "operation-requires-reload" => true,
    "process-state" => "reload-required"
  }
}
[standalone@localhost:9999 /] /subsystem=web/configuration=jsp-configuration:/write-attribute(name=check-interval,value=3)
{
  "outcome" => "success",
  "response-headers" => {
    "operation-requires-reload" => true,
    "process-state" => "reload-required"
  }
}
[standalone@localhost:9999 /]
```

- CLI를 실행하면, 다음과 같이 standalone.xml 파일에 설정된다.

```
<subsystem xmlns="urn:jboss:domain:web:1.5" default-virtual-server="default-host" native="false">  
  <configuration>  
    <jsp-configuration development="true" check-interval="3"/>  
  </configuration>  
</subsystem>
```



제품이나 서비스에 관한 문의

콜 센터 : 02-469-5426 ( 휴대폰 : 010-2243-3394 )

전자메일 : [sales@openmaru.com](mailto:sales@openmaru.com)